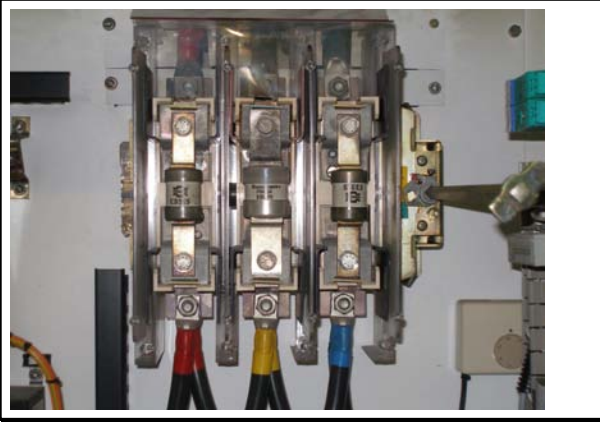
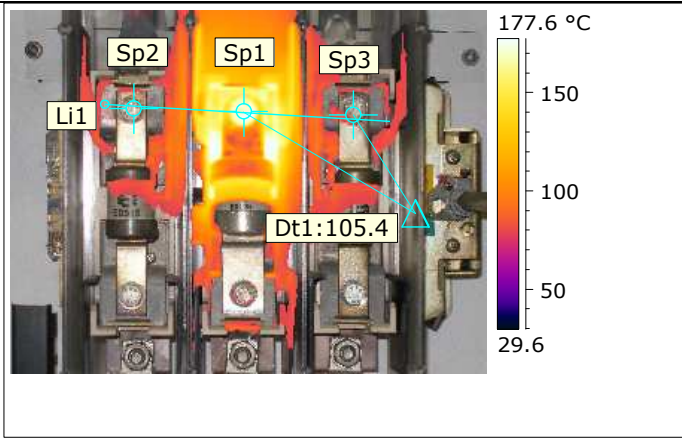


	Thermography Inspection In Substation C Switchroom	Date: 6 June 2008
--	---	------------------------------

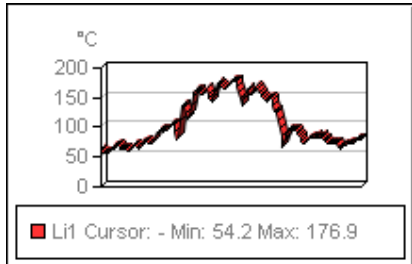
Photo and Identification



Location
Substation C Switchroom
Panel 82/1
Main Fuses



Atmospheric Temperature	20.0 °C
Image Max. Temperature	198.6 °C
Image Date	06/06/2008
Sp1 Temperature	166.2 °C
Sp2 Temperature	62.0 °C
Sp3 Temperature	60.8 °C
Dt1 Value	105.4



Analysis & Recommended action:

On entering the Switchroom there is the smell that something is hot.
From the thermal image it is clear that the centre fuse is running in excess of 100C hotter than the other two

Immediate action required

- Check terminals for damage or corrosion
- Check connection to ensure that it is tight
- Recheck with IR camera after work has been done and fan back in service

Inspected by :

Signature:..... date:

Repaired by:

date:

Comment:.....