

# Alpine Components

Telephone: 01424 437000 E-mail: [info@alpine-components.co.uk](mailto:info@alpine-components.co.uk)  
Web: [www.alpine-components.co.uk](http://www.alpine-components.co.uk) Fax: 01424 722502

## Installation of QuickView 2

If you have any previous version of QuickView (v1.3 or pre-release of v2), please uninstall first.

Open Control Panel and use Add / Remove Programs to remove (if present)

- a. Flir Systems Device Drivers
- b. Flir Systems Runtime Environment
- c. ThermaCAM QuickView 1.3 and/or 2
- d. Windows Driver Package Flir Systems ...

**InfraCAM or B-CAM is by default connected to the PC as a USB mass storage device (MSD) (Check USB Cable mode). No USB drivers are needed. You use ordinary Windows file handling to copy or move images to the PC.**

**The QuickView 2 CD will normally start automatically when inserted. You will have two options:**

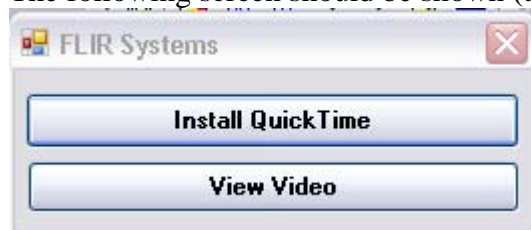
- **To use QuickView with InfraCAM and BCAM as MSD: Continue installing QuickView 2 automatically. Select language and click OK.**
- **To also use streaming of Mpeg4 video from InfraCAM and BCAM, insert the CD again and:**
  - **Click Cancel when asked to select language.**
  - **Open subdirectories on the CD and install Network components manually as described below. Set InfraCAM or B-CAM to Quickview mode. QuickView 2 will**
    - a. **Allow streaming of Mpeg4 video from the camera**
    - b. **Detect that a camera is connected and open a file transfer dialogue**

**To install QuickView 2 Network components:**

- 1) Use Windows Explorer to browse to the folder Device Drivers
- 2) Double click FLIR USB Network Driver V2.exe (ok/continue on all questions)
- 3) Double click FLIR Systems Camera Monitor 4.exe (ok ...)
- 4) Configure your firewall according to instructions in pages 3-5 of this document  
NOTE:
  - If you configure the firewall with network connected, it may be necessary to configure the firewall again when you use the pc in an environment with no network.
  - If you configure the firewall with no network connected, it may be necessary to configure the firewall again when you connect to the network..
- 5) The file FLIR.Video.exe from the folder FLIR Live Video from the CD will allow you to view streaming Mpeg4 video. Copy this file to any folder on your hard drive. A good idea is to create a Shortcut by right clicking the exe, then move the shortcut to the Desktop.

- 6) If you are using a USB HUB or docking station, install the Microsoft fix found on the CD Device Drivers\WinXP RNDIS HotFix\WindowsXP-KB890927-v3-x86-ENU.exe (double-click the executable)
- 7) Restart the computer (remove CD)
- 8) Start the camera and walk to the menu item Settings - USB Cable -> QuickView
- 9) Connect the USB Cable
- 10) Watch that the blue pop-up messages "Configuring...., Connecting.... , Connected...." are shown.

- Start Live Video Application by double click [FLIR.Video.exe](#) or the shortcut. The following screen should be shown (this can take a few minutes):



- Click Install Quick Time to download and install Player if you need.



After installation of QuickView 2, you can (re-)install QuickView 1.3 for use with E, P and S cameras.

To use QuickView 2 with E, P, and S cameras:

- In the subdirectory Camera Drivers, find the files.
  - i. FLIR FireWire Network Driver V1.exe
  - ii. FLIR FireWire Video Driver V1.exe
  - iii. FLIR USB Network Driver V1.exe

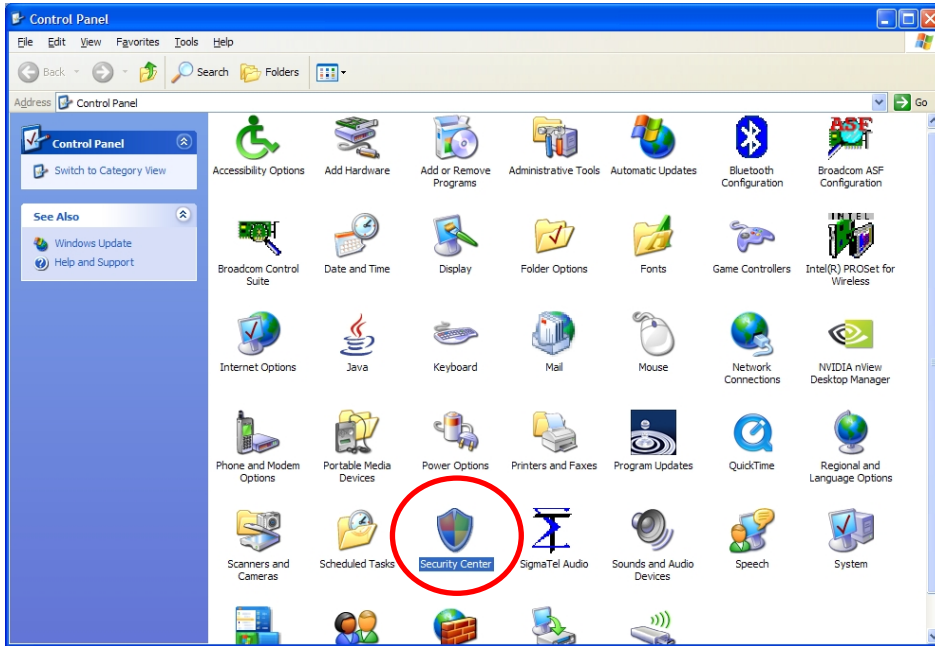
Double click on these, one at a time. If asked to proceed, click "OK".

When the camera is connected, the "Found new hardware" message will be shown. Then just proceed with OK where appropriate. No Firewall settings have to be altered.

## Configure firewall (XP)

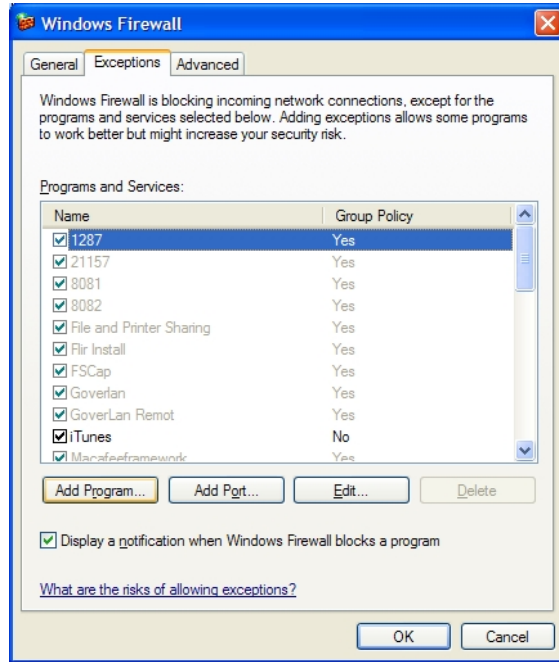
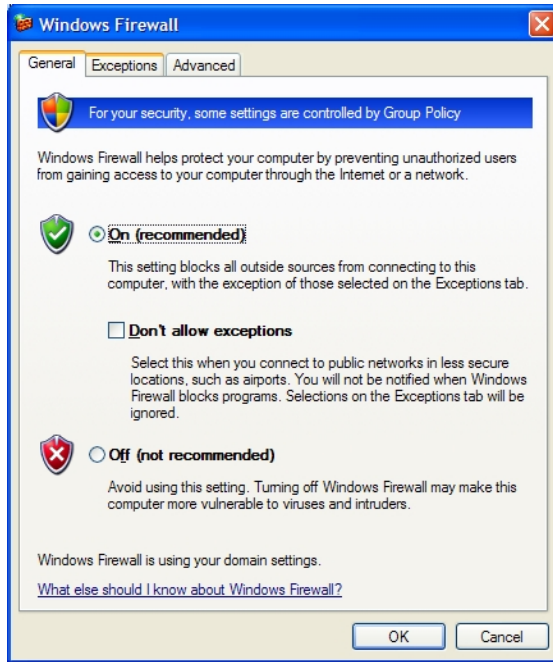
Add the exe files T3Srv.exe and T3Mon.exe to Firewall exceptions by following the procedure:

In Windows Control Panel, select Security Center, then Windows Firewall



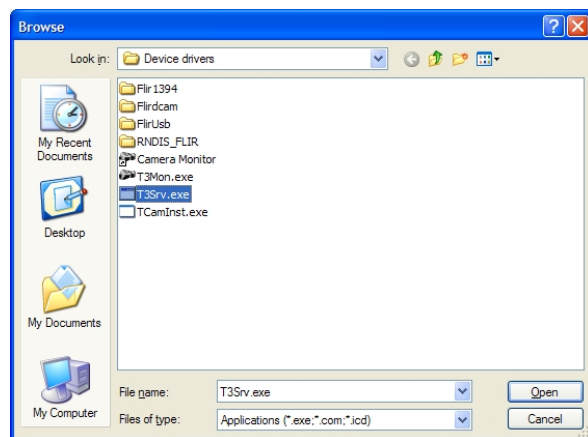
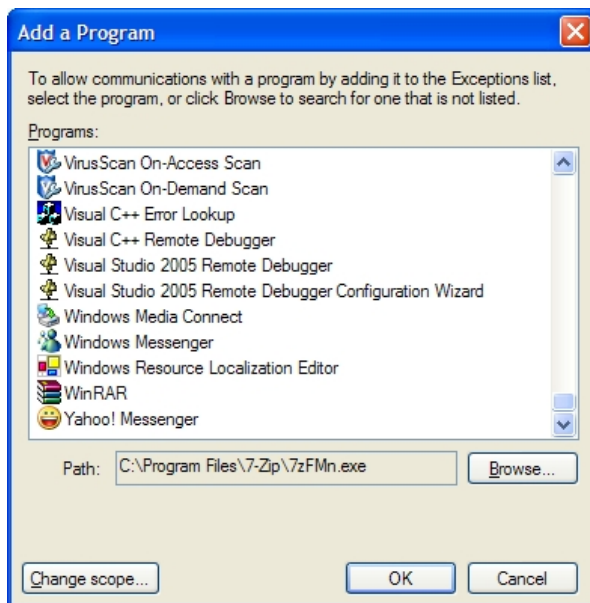
In Windows Firewall, select Exceptions,

In exceptions, select <Add Program ...>

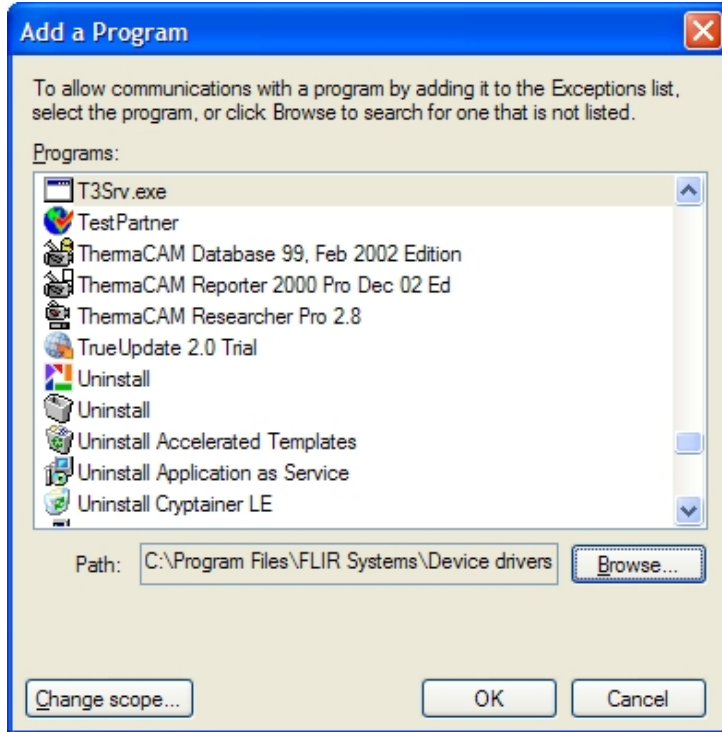


In Add a program, select <browse...>

Select c:\Program files\Flir Systems\Device Drivers\T3Srv.exe - Open



Select Ok.



Now proceed to add T3Mon.exe following the same procedure as for T3Srv.exe

The final configuration of your Windows Firewall:

