

FLIR i-Series

Easy-to-use point-and-shoot thermal imaging cameras



FLIR i3/i5/i7 are the smallest, lightest and most affordable thermal imaging cameras on the market. They are incredibly easy to use and require no former experience. It really is a matter of "point and shoot" to obtain thermal images that will immediately give you the thermal information you need.



Outstanding ease-of-use

The cameras are extremely easy to understand and operate, designed for entry-level users. The cameras are intuitive and come with a full manual.



Fully automatic

FLIR i3/i5/i7 produce instant, point-and-shoot JPEG thermal imagery with all required temperature data included.



Focus free

The fixed focus free lens makes using the FLIR i3/i5/i7 a snap.



Compact and lightweight

FLIR i3/i5/i7 weighs only 365 g, and is easy to store in a belt pouch.



Extremely rugged

FLIR i-Series thermal imaging cameras withstand a 2 meter drop. They are splash proof and IP43 rated.



SD card storage

Stores images with unique ID in radiometric JPEG format, containing all temperature data, on a standard miniSD card. USB file transfer to PC.



Reporting and analysis software included

FLIR Tools software is included and the cameras are also compatible with the more powerful FLIR Reporter.



Measure temperatures

Measures temperatures up to +250°C and detects temperature differences as small as 0.10°C (0.15°C for FLIR i3).



Measurement functions

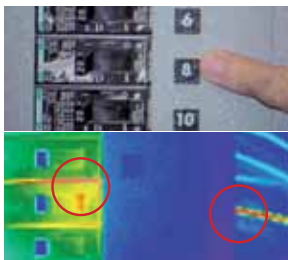
Spotmeter, box with max./min. temperatures, isotherm above/below.*

** Features dependant on camera model, please check technical specifications for more details.*

Alpine Components

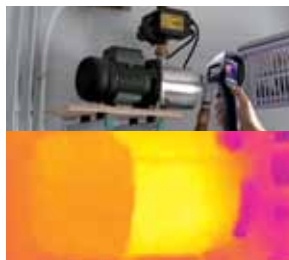
Telephone: 01424 437000 E-mail: info@alpine-components.co.uk
Web: www.alpine-components.co.uk Fax: 01424 722502

Locate electrical problems



Issues with electrical connections, wiring or other system components are clearly highlighted as "hot spots" with thermal imaging. This makes them easy to locate and repair. You can clearly see the overheated connections on the thermal image.

Check mechanical devices



Inspection of this water pump shows no problem. The thermal image verifies that there is water in the pump cylinder and there is no danger of overheating the pump.



Save time and money in 3 steps:

- Detect hidden problems, make quick damage assessments and perform preventive inspections
- Identify energy losses and poor insulation
- Spot electrical faults before it is too late
- Produce instant thermal images of your findings
- Create reports, analyse and document your findings with the easy-to-use software

FLIR i-Series camera model comparison



FLIR i3	FLIR i5	FLIR i7
		
Thermal image quality: 60x60 pixels	Thermal image quality: 100x100 pixels	Thermal image quality: 140x140 pixels
Field of View: 12.5°(H) x 12.5°(V)	Field of View: 21°(H) x 21°(V)	Field of View: 29°(H) x 29°(V)
Thermal sensitivity: 0.15°C	Thermal sensitivity: 0.10°C	Thermal sensitivity: 0.10°C
Center spot	Center spot	Spotmeter, area with max./min. temperature, isotherm above/below

FLIR i3 / i5 / i7

Technical specifications

Camera specific

	FLIR i3	FLIR i5	FLIR i7
Field of view/min focus distance	12.5° x 12.5°/0.6 m	21° x 21°/0.6 m	29° x 29°/0.6 m
Thermal sensitivity	0.15°C	0.10°C	0.10°C
IR Resolution	60 x 60 pixels	100 x 100 pixels	140 x 140 pixels
Measurement modes	Center spot	Center spot	Center Spot, box with max./min. temp., isotherms above/below selected temperature interval

General

Imaging performance

Spectral range	7.5 - 13 μ m
Spatial resolution (IFOV)	3.7 mrad
Image Frequency	9 Hz
Focus	Fixed
Focal Plane Array (FPA)	Uncooled microbolometer

Image Presentation

Display	2.8" color LCD
---------	----------------

Measurement

Object temperature range	-20°C to +250°C
Accuracy	± 2 °C or $\pm 2\%$ of reading

Measurement analysis

Emissivity correction	Variable from 0.1 to 1.0 or selected from list of materials
Reflected apparent temperature correction	Automatic, based on input of reflected temperature

Setup

Color palettes	Iron, Rainbow and Black/White
Set-up controls	Local adaptation of units, language, date and time formats; automatic shutdown

Image Storage

Type	MiniSD card
File format	Standard JPEG - 14 bit measurement data included

Power

Battery Type	Li-Ion rechargeable
Battery operating time	5 hours, display shows battery status
Charging system	In camera, AC adaptor; 3 hours to 90% capacity
AC operation	AC adaptor 90-260 VAC input
Power management	Automatic shutdown (user selectable)
Adaptor voltage	5 VDC out

Environmental specifications

Operating temperature range	0°C to +50°C
Storage temperature range	-40°C to +70°C
Humidity	Operating and storage IEC 60068-2-30/24 h 95% relative humidity
Shock	25G, IEC 60068-2-29
Vibration	2G, IEC 60068-2-6
Drop	2 m
Encapsulation	Camera housing and lens: IP43

Physical characteristics

Dimensions	223 x 79 x 83 mm
Weight	365g, including battery
Shipping size	120 x 400 x 320 mm
Shipping weight	2.8 kg

Standard package

FLIR i3, FLIR i5 or FLIR i7 thermal imaging camera, hard transport case, FLIR Tools™ PC software CD-ROM, printed getting started guide, printed important information guide, warranty extension card, user documentation CD-ROM, calibration certificate, hand strap, battery (inside camera), power supply/charger with EU, UK, US and Australian plugs, USB cable, miniSD card, with SD card adaptor



* After product registration on www.flir.com