

ULTRAPROBE® 9000

Digital ultrasonic inspection system for predictive maintenance with easy software reporting tools

The Ultraprobe® 9000 is a digital ultrasonic inspection, information, storage and retrieval system that's versatile and easy to use (most operators learn within 15 minutes!). This Ultraprobe® will help move you through inspections quickly. Whether used for trouble-shooting or a pre-planned route, data is easily viewed on the display panel and stored with the push of a button.



Scale is in calibrated decibels traceable to NIST

The easy-to-read display panel offers calibrated decibel readout and a 16-segment bar graph, which instantly registers sound intensity changes and simultaneously registers peak hold as you scan.

The Ultraprobe® 9000 engineering combines the best of both worlds:

- Scans as quickly as with analog instruments
- Uses the digital information to store and trend

On board data logging utilizing **Ultratrend DMS™ (Data Management System)** provides:

- Multiple data views
- History table/spread sheets
- Trend charts
- Export files to MS Excel
- Flexibility as never before!



UE Systems unique Spin and Click™ technology makes sophisticated inspection simple and quick!

You'll be amazed at how much you can accomplish with only 2 controls.

By just **"spinning"** and **"clicking"** you can:

- Locate and identify potential problems
- Store data
- Change frequency and sensitivity quickly
- Download data via USB output
- Adjust basic operation modes
- Select "snap shot" function... and more!





Ultraprobe® 9000 features

- Open Platform Software
- Interchangeable Modules
- Frequency Tuning
- Spin and Click™ Technology
- Ultratrend Sound Filtration
- 120 dB Dynamic Range
- Acoustic Isolating Headphones
- Environmentally friendly rechargeable batteries
- Easy interface for most Vibration Analyzers including SKF, ENTEK, DLI, CSI, DI

Typical Ultraprobe Applications Data Based Mechanical Inspection/Trending

- Bearing Conditions
- Rubbing Conditions
- Cavitation
- Gears/Gear Boxes
- Pumps/Motors
- Lack of Lubrication

Data Based Leak Detection/ Energy Audits

- Compressed Air
- Compressed Gases (O2, NO, etc.)
- Vacuum Leaks
- Seals and Gaskets
- Condenser Tubes
- Cockpit Windows
- Hatches
- Boilers
- Heat Exchangers
- Valves
- Steam Traps

Data Based Electrical Inspection

- Arcing
- Tracking
- Corona
- Switchgear
- Transformers
- Insulators
- Relays
- Bus Bars

Ultraprobe® 9000 Specifications

Construction	Hand-held pistol type made with coated aluminum and ABS plastic
Circuitry	Solid State SMD Digital Circuitry with temperature compensation
Frequency	20 kHz to 100 kHz (tunable in 1 kHz increments)
Response Time	< 10 ms
Display	16 x 2 LCD with LED Backlight
Memory	400 storage locations
Battery	NiMH Rechargeable
Operating Temperature	0 °C to 50 °C (32 °F to 122 °F)
Outputs	Calibrated heterodyned output, decibel (dB) frequency, USB data output
Probes	Trisonic Scanning Module and Stethoscope Module
Headset	Deluxe noise attenuating headphones for hard hat use
Indicators	dB, Frequency, Battery Status and 16 Segment Bar Graph
Sensitivity	Detects 0.127 mm (0.005") diameter leak @ 0.34 bar (5 psi) at a distance of 15.24 m (50 ft.)
Threshold	1 x 10 ⁻² std. cc/sec to 1 x 10 ⁻³ std. cc/sec
Dimensions	Complete kit in Zero Halliburton aluminum carrying case 47 x 37 x 17 cm (18.5" x 14.5" x 6.5") Pistol Unit: 0.9 kg (2 lbs.) Complete carrying case: 6.4 kg (14 lbs.)
Weight	1 kg (2 lbs.)
Warranty	1-year parts/labor standard, 5 years with completed warranty registration card.
Display Modes	Real Time, Snap Shot, Peak Hold and Storage Display <small>*depends on leak configuration **specify Ex rating if needed at time of order</small>



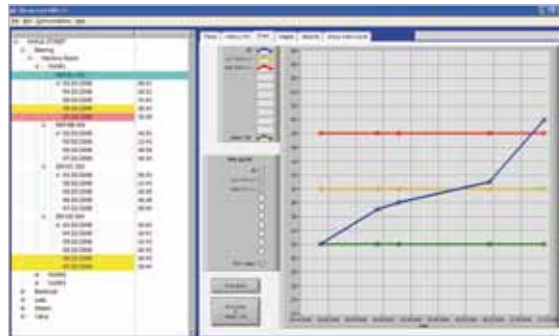
Stethoscope module



Long range module



Close focus module



DMS - Data Management Software



Alpine Components

Telephone: [01424 437000](tel:01424437000)

E-mail: info@alpine-components.co.uk

Web: www.alpine-components.co.uk

Fax: [01424 722502](tel:01424722502)